



TAJIMI  
CUSTOM  
TILES

## ORI by Ronan Bouroullec

Ori is a long, slender tile, crafted using the extrusion method, featuring a top surface that rises into a subtle, gentle chevron shape. The reactive glaze (yohen) bestows each piece with a unique, rich character. Positioned beautifully between standard tiled walls and artistic reliefs, Ori is designed purely to express the innate beauty of ceramics. Once installed, its airy softness —reminiscent of a textile weave— brings a dynamic sense of movement to rigid, flat walls.

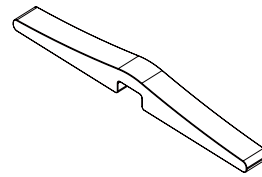
**Note:** Tiles cannot be repositioned easily once fixed. We highly recommend a layout simulation before adhesion. Install from corners, alternating vertically and horizontally. For adhesion, use elastic tile adhesive, applying only the necessary amount to prevent squeeze-out, or use strong double-sided construction tape.



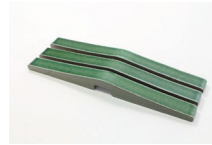
PRICES [ex-works] ※Japan exclusive

### Quantity

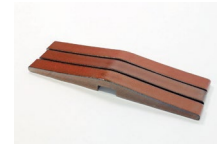
1-9.....	¥ 2000
10-49 .....	¥ 1600
50-99 .....	¥ 1300
Over 100.....	¥ 1100



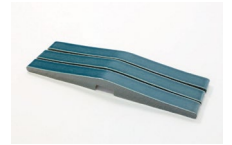
Size: L300 x W27 x T28mm  
44.5 piece /m<sup>2</sup>



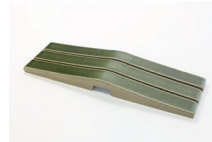
ORI-01



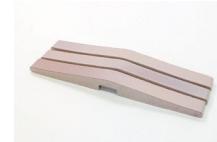
ORI-02



ORI-03



ORI-04



ORI-05



ORI-06



ORI-07



ORI-08